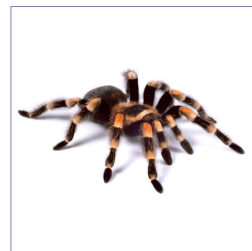


## Tarantula

## Including Pink Toed / Red Knee / Rose Haired

Scientific Name: Theraphosidae

### Brief Description:



Tarantulas are members of the spider family, are often hairy and exist as a species with over nine-hundred related members. Their distribution is far reaching from the West Jungles to deserts. They have eight eyes and are active during the night. Females tend to be a bit larger and live considerably longer than males do.

**Average Size:** The average size of a Tarantula is two to ten inches in length.

**Average Life Span:** Five or more years with proper care.

### Feeding:

Proper feeding and feeding frequencies of your Tarantula, is critical for your pet's on-going health. We have included some guidelines, below.

- Feed juveniles, several times per week. / Feed adults, once per week.
- Food items need to be smaller than your pet, Tarantula.
- Remove uneaten food as soon as possible.
- Tarantulas require gut-loaded (recently -fed) prey.
  - o Crickets
  - o Mealworms
  - o Super worms
  - o Roaches
- Tarantulas may also eat frozen pinkie mice, warmed to room temperature.

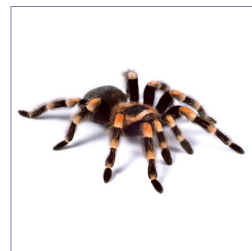
## Tarantula

### Including Pink Toed / Red Knee / Rose Haired

Scientific Name: Theraphosidae

#### Housing:

Pet Tarantula should be housed in a plastic or glass aquarium, approximately three-times the leg-span long and two-times the leg span wide of the Tarantula. The height of the enclosure should be the length of the Tarantula for ground dwellers and about ten-inches for free-dwelling Tarantulas. Your enclosure should also have a secure lid with adequate ventilation.



#### Habitat:

- Tarantulas will require one or more hiding spots, such as a half-log.
- Tree dwelling Tarantulas will require branches and twigs to build webs.
- It's important to maintain fifty-to-ninety percent humidity by misting as needed.

#### Substrate:

- Avoid using gravel and artificial turf due to its abrasive nature.
- Use much-type such as coconut fiber bedding.
- Reptile bark or dampened sphagnum moss are good options.

#### Temperature:

- Optimal temperature range for your pet Tarantula is seventy-eighty °F.

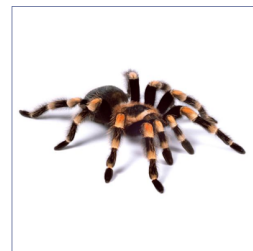
## Tarantula

### Including Pink Toed / Red Knee / Rose Haired

Scientific Name: Theraphosidae

#### Lighting:

- Keep away from direct sunlight.
- Enclosure should be left in darker part of room.
- Avoid incandescent lights which can dry out a tarantula.
- Use a nocturnal or infrared light to watch your pet after dark.



#### Maintenance:

Providing regular maintenance and care for your tarantula and habitat is key for a long, happy and healthy life-span.

- Use a fine mesh or cup to remove the tarantula for maintenance.
- Fill the water bowl daily and replace the bowl with a disinfected, clean bowl.
- Mist your pet's enclosure as required, to keep the habitat moist.

#### Temperatures:

Environment temperatures are very Important for your pet Tarantula.

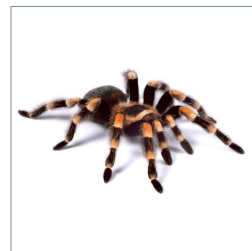
- Keep temperatures in the seventy-two-to-eighty-two °F range.
- Heat lamps with black/red bulbs are a great way to raise temperatures.
- Heating pads, under enclosure can also help raise temperatures.

## Tarantula

## Including Pink Toed / Red Knee / Rose Haired

Scientific Name: Theraphosidae

### Humidity:



It's virtually important to keep the correct humidity level for your pet Tarantula to remain healthy as dehydration can be fatal.

- Spray-mist the habitat as required to keep the enclosure moist.

### Water & Accessories:

- Provide a shallow dish for water.
- Use only fresh, filtered and chlorine-free water.
- A stone in the dish will help Tarantula and Crickets avoid drowning.

### Reproductive:

The Tarantula mating ritual consists of a few tests for compatibility, before any tentative advances. After mating, the female will tunnel under large stones and spin a large sheet on which she will lay her eggs. Continue reading, to learn more.

- Females remain with their eggs for six-to-seven weeks.
- Spiderlings will remain in the burrow for days to weeks.
- Mortality among spiderlings is quite high.
- Males usually live about one year after their first molt.
- Females can live many years after becoming sexually mature.

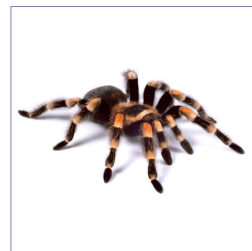


## Tarantula

### Including Pink Toed / Red Knee / Rose Haired

Scientific Name: Theraphosidae

#### Notes and Comments:



We don't suggest handling a Tarantula. Most Tarantula's, if they feel threatened, may bite, or run and fall. Even a short fall can cause serious injury to your pet or even a fatal injury. Their bite can be described as bee sting, but is still painful and some maybe especially sensitive. If bitten, seek medical attention immediately.

As part of their natural defense the hairs on some tarantulas can be "flicked", these hairs may also cause allergic reactions or irritation. They are solitary, so, keep only one to a cage.

When tarantulas molt, they lie on their back with their feet up in the air. Juveniles molt about four times a year and adults once a year. They may stop eating up to two weeks before a molt, do not disturb during this time, be sure to remove all live food from enclosure as even a cricket could harm them during this period.