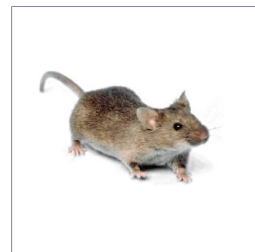


## Mouse

Scientific Name: Mus Musculus

### Brief Description:



Mice come in a variety of colors with an assortment of markings. They have a pointed snout, small rounded ears, a body-length scaly tail and a high breeding rate. Mice are very social, alert, adaptable and active that have become a popular companion animal for many people.

**Average Size:** The average size of a mouse is approximately three inches in length.

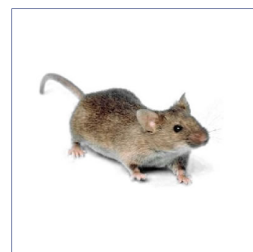
**Life Span:** The average mouse life span is three years.

### Feeding:

- Feed your pet Mouse fresh food and water and ensure its availability.
- Small amounts of vegetables and fruits can be given daily.
  - o Pears, grapes, strawberries, dates, raisins, sprouts and carrots.
- Provide dark leafy greens, every other day.
- Pellets should consist of seventy-five percent of their intake.
- Remove any food not eaten, within twenty-four hours.
- Treats should not exceed ten percent of total food intake.
- Do not feed chocolate, alcohol or caffeine.

## Mouse

Scientific Name: Mus Musculus



### Housing:

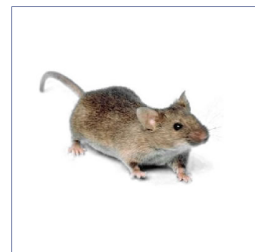
- Mice acclimate well to average household temperatures.
- Avoid extreme temperature changes
- Habitat should never be left in direct sunlight or drafty areas
- Habitat should be made of glass, plastic or metal, be escape proof with a solid bottom.
- A ten gallon tank should suffice for two Mice. However, it's best to provide the largest habitat possible.
- Different types of small animals should not be housed together.
- Same sex Mice can be territorial and aggressive, so keep them separate.
- Habitat should be at least twelve inches, by twelve inches, by twelve inches, with multiple levels.
- Clean housing regularly.

### Maintenance:

- Remove all wet spots on a daily basis.
- Change bedding on a weekly basis or more often as needed
- Remove and wash all items in the habitat.
- Scrub habitat with proper cleaning agents.
- Rinse furniture and enclosure, allow to dry and return items.

## Mouse

Scientific Name: Mus Musculus



### Maintenance:

- Remove all wet spots on a daily basis.
- Change bedding on a weekly basis or more often as needed
- Remove and wash all items in the habitat.
- Scrub habitat with proper cleaning agents.
- Rinse furniture and enclosure, allow to dry and return items.

### Temperatures:

- Stable room temperature is adequate.

### Humidity:

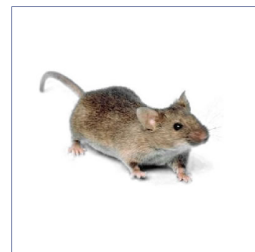
- No special requirements.

### Lighting:

- Mice are nocturnal, keep out of direct sunlight. Use room light as required.

## Mouse

Scientific Name: Mus Musculus



### Water and Accessories:

- Mice should be provided with a sipper bottle, hung from the side of the cage.
- They will require small toys to play with and a running wheel for exercise.
- Keep a food bowl, check sticks and nesting house as well.

### Reproductive:

- Mice can start reproducing at an early age.
- Male and females can start breeding at six weeks of age.
- Females first litter are often smaller
- Breeding mice is fairly easy with one simple rule:
  - o Only ONE male to cage.
- Multiple males will fight and kill each other
- Multiple males will often damage the females and kill the babies
- A single male and a few females should produce babies every eighteen-to-twenty-eight days.
- Laboratory mice can produce litters of up to twenty-five babies every twenty-eight days.
- To get a constant production of mice, you will require a many cages.

Petware  
House

## Mouse

Scientific Name: Mus Musculus



### Grooming:

Mice stay clean and do not need baths. They can be spot cleaned with a damp washcloth or un-scented baby wipes.

### Notes and Comments:

Mice are active during the night and sleep during the day (nocturnal). They are easy to handle once trust is established between you and your mice; they may become irritable and nip if suddenly awakened from a nap or startled.

Mice chew on objects to maintain the incisor teeth, which grow continuously. Use cheek pouches to transfer food from one location to another.