

King Snake

Scientific Name: *Lampropeltis*

Brief Description:

King Snakes are available in a wide variety of wonderful colors and patterns, making them a very popular pet. This specie of snake belongs to the Colubrade family. They are also native to temperate and sub tropical areas of North American, Asia and Europe. This specie is very easy to care for, more so, than most snakes.



Average Size and Lifespan:

Kingsnakes vary widely in size and coloration. They can be as small as 24" (61 cm) or as long as 60" (152 cm). Some kingsnakes are colored in muted browns to black, while others are brightly marked in white, reds, yellows, grays, and lavenders that form rings, longitudinal stripes, speckles, and saddle-shaped bands.

Feeding:

Feeding your King Snake is a very simple, straight-forward, process. However, you have to adhere to a few guidelines and principles as mentioned below:

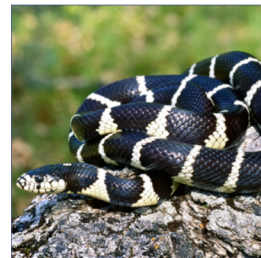
- Feed your snake appropriately sized prey. The food items should be no bigger than the snake's largest point.
- King Snakes are perfectly happy eating mice their entire lives.
- Avoid handling King Snake for at least a day after feeding or it may regurgitate.
- King Snake has a voracious appetite and are easy to convert to frozen/thawed food.

King Snake

Scientific Name: Lampropeltis

Housing:

King Snakes are one of the few species that would prefer to be housed in a small enclosure as a large habitat often leads to a stressed and overwhelmed snake. Fortunately, adult King Snakes do not require an elaborate setup. However, the more stuff you have as decorations, the more cleaning and disinfecting you will have to do. Learn more below:



- Housing can consist of a plastic sweater box, such as those by Rubbermaid.
- Melamine racks are quite good.
- Freedom Breeder cages are an excellent suggestion.
- Commercially available plastic-type cages, such as those from Vision Herp.
- Glass aquariums and tanks with screen tops are a great choice.
- Juvenile King Snakes seem to do well in a large or elaborate enclosure.
- Adult King Snakes should be housed in an enclosure thirty-six inches, by eighteen-inches, by twelve inches.

Maintenance:

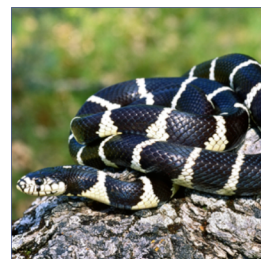
Compared to some other pet's King Snakes are relatively easy to care for.

- Provide fresh clean drinking water, everyday.
- Ensure adequate temperatures.
- Once a month, provide a deep cleaning and sterilize the environment and any decorations.
- As for bedding, Aspen bedding is a great choice.
- Spot clean enclosure as necessary and clean water bowl weekly.
- Remove feces and uneaten prey as soon as possible.
- Remove all housing items for disinfection and cleaning, every thirty days.

King Snake

Scientific Name: Lampropeltis

Maintenance Continued:



King Snake are very simple to care for. Read below for more details.

- Spot clean enclosure when necessary.
- Remove feces and uneaten prey as soon as possible.
- Clean and disinfect water bowl, weekly.
- Remove all cage items for disinfection and cleaning, every thirty days

Temperatures:

Keeping your King Snake comfy is an absolute must. Below provide with all the details you will need to accomplish this.

- Basking spot of eight-eight to ninety degrees Fahrenheit.
- An ambient temperature of seventy-to-seventy-five degree fahrenheit. Should not fall below seventy degrees fahrenheit.
- You must know the temperatures in which you are keeping your snake! Don't Guess!
- Monitor temperatures using a digital indoor/outdoor thermometer with a probe.
 - Stick thermometer to the inside of the cage on the cool end.
 - Place the probe on the warm end
- Heat housing with under-cage heating pads, ceramic heat emitters or basking bulbs.
- Use thermostats rheostat and timers to control your heat source.
- Do not use rocks.

King Snake

Scientific Name: *Lampropeltis*

Humidity:

Fortunately, King Snakes are very low maintenance when it comes to humidity requirements. However, if incomplete or stuck sheds are noticed, humidity can be raised slightly by providing a humidity box.



Lighting:

Supplemental lighting is not a requirement for this species, but if used should run on a twelve-twelve cycle meaning twelve hours on and twelve hours off. Continuous bright light is stressful to snakes.

Water and Accessories:

- Always keep a fresh bowl of water for your King Snake and replenish daily.
- King Snakes do not soak regularly in their water bowls.
- For juvenile animals a one-inch deep bowl will suffice.
- Clean and disinfect water bowl as necessary.
- Keep a spare water bowl on hand while one is being cleaned.

Reproductive:

- King Snakes reach sexual maturity anywhere from eighteen months to three years of age.
- Breeding season ranges from November to May.
- Start with a brumation period and subject snakes to forty-five to fifty-five degree Fahrenheit temperatures for sixty to ninety days.
- Stop all feeding two weeks prior to brumation. Ensure snakes are in perfect health.