

Chinchilla

Scientific Name: Chinchilla Lanigera

Brief Description:



Also called the Chilean, Coastal or Common and is one of two species of rodent from the genus Chinchilla. This pet will require extensive exercise and their teeth need to be worn down, as they grow continuously and can prevent them from eating if they become overgrown. Also, the Chinchilla requires plenty of activity and a busy environment to keep them stimulated.

Average Size: The average size is ten-to-fourteen inches.

Average Life Span: Up to fifteen years.

Feeding:

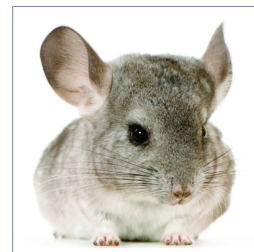
- Fresh food and water should always be available.
- Chinchillas eat and drink in very small amounts.
- Pellets and Timothy hay will meet your pets needs.
 - o In a mixed ration, they may have raisins and seeds.
- Chinchillas should avoid fresh fruit and vegetables as they may cause them to bloat.
- Do not feed houseplants as they are toxic nor grass as it may contain pesticides.
- Treats should not exceed ten percent of total food intake.
- Do not feed chocolate, alcohol or caffeine.
- Provide your Chinchilla with fresh, de-chlorinated water, changed daily.
- Provide a high-quality, Chinchilla food.
- Raisins will help aid in fiber.

Chinchilla

Scientific Name: Chinchilla Lanigera

Housing:

- Chinchillas acclimate well to average household temperatures.
- Be cautious of extreme temperature changes.
- Do not leave habitat in direct sunlight or in a drafty area.
- Habitat should be escape proof and have a solid surface
- Provide the largest habitat possible.
- They enjoy tunnels and hide outs.
- Chinchillas need a multi-leveled habitat.
- Proper bedding should be one-to-two inches thick and include shavings, pelleted or recycled product.
 - o Cedar-based bedding may cause harm and is not recommended.
- Different types of small animals should not be housed together.



Maintenance:

- Remove web spots daily.
- Change bedding weekly or more often if needed.
- Wash all items in the habitat and the enclosure, once a week.
 - o Scrub with mild soap and water, rinse and allow to dry.

Temperature: Stable room temperature is adequate. No special requirements.

Humidity: No Special Requirements.

Chinchilla

Scientific Name: Chinchilla Lanigera

Lighting: Use room lighting as needed.

Water and Accessories:

- Provide your pet Chinchilla with a sipper bottle, hung from the side of the cage.
- Keep a food bowl, chew sticks and a mineral wheel as well.
- Provide small toys for your Chinchilla to play with.



Reproductive:

- Female Chinchilla should not mate until nine months.
- Gestation is one-hundred-eleven-days.
- Chinchillas usually have small litters of one-to-two pups.
- Newborns are born with hair and teeth.
- Weaning should begin at eight weeks.

Notes and Comments:

Chinchillas do not bathe in water because the dense fur prevents air-drying, retaining moisture close to the skin, which can cause fungus growth or fur rot. A wet chinchilla must be dried immediately with towels and a no-heat hair dryer.

They require dust baths three times weekly.

Chinchilla

Scientific Name: Chinchilla Lanigera

Notes and Comments: (con't)

With gentle handling from a young age most chinchillas will become quite tame and bond closely with their owners, although sometimes they do not like to be held or cuddled. They are very active and playful. Chinchillas can be kept singly, and usually will do fine as same sex pairs especially if they are litter mates or introduced at a young age.



Petware House